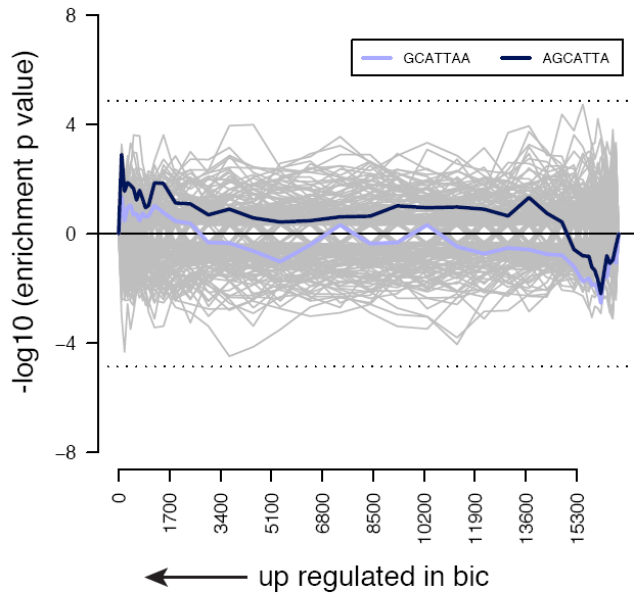
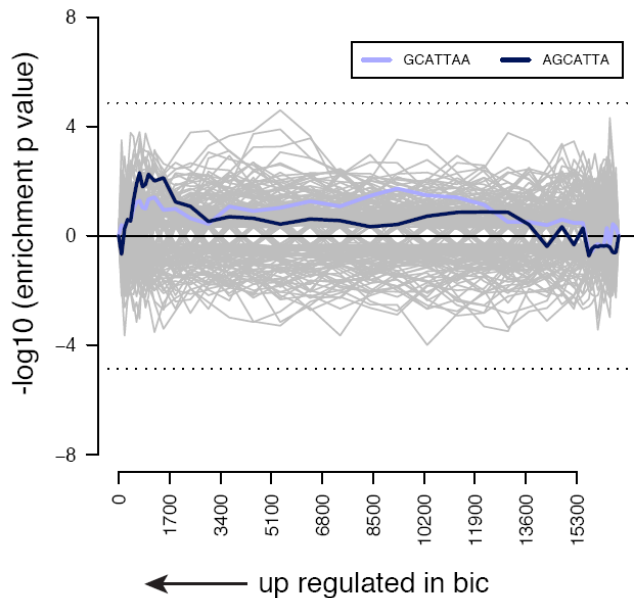


Colon bic vs wt



Cecal patch bic vs wt



Sylamer analysis of colon and cecal patch gene lists. The x-axis represents all the genes with an annotated 3'UTR sequence, sorted starting from the most up-regulated in the *bic* samples. The y-axis represents the $-\log_{10}$ transformed hypergeometric P-values, with positive values denoting enrichment and negative values depletion. Each gray line represents a single 7-nucleotide seed-matching word and those corresponding to miR-155 are highlighted. Dotted lines represent Bonferroni-corrected P-value significance thresholds of 0.01.